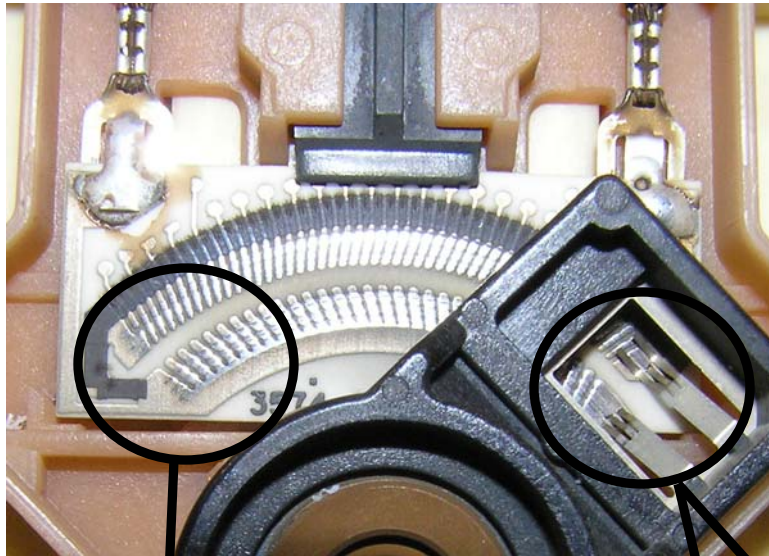
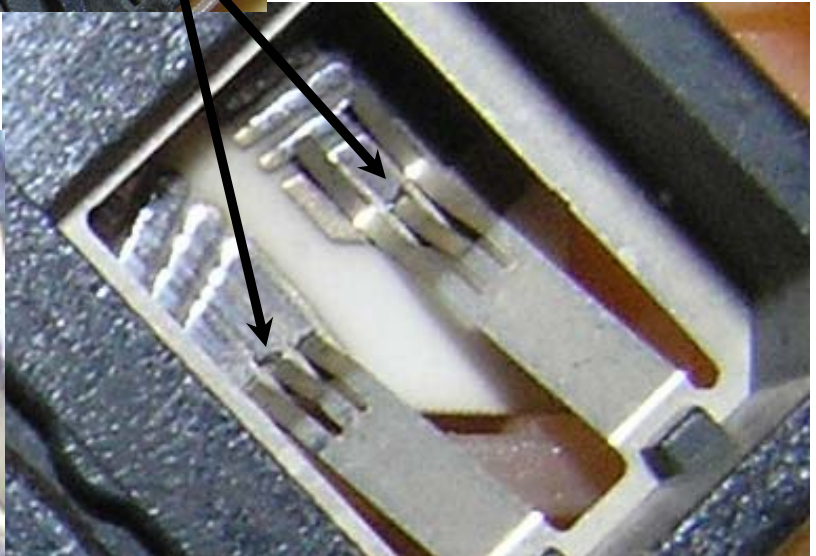
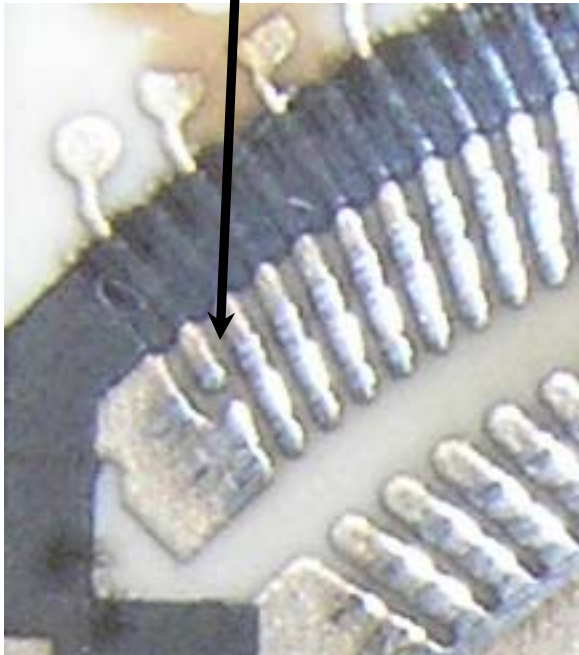


COMPARISON OF RESISTOR

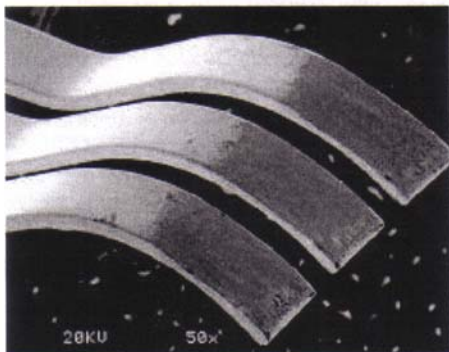


Other industry resistor contact arms can break easily (1b) and once broken become sharp. The sharp edges wear away the contact material (1a) that provides gas level data for the vehicle's fuel gauge which causes erratic readings and fuel sensor failure.



1b

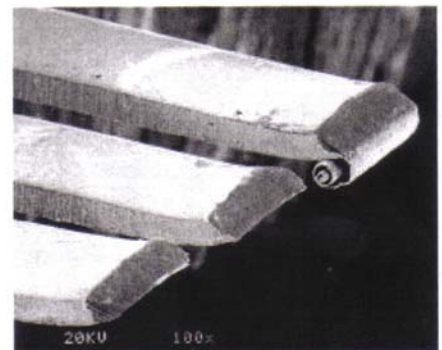
1a



1c

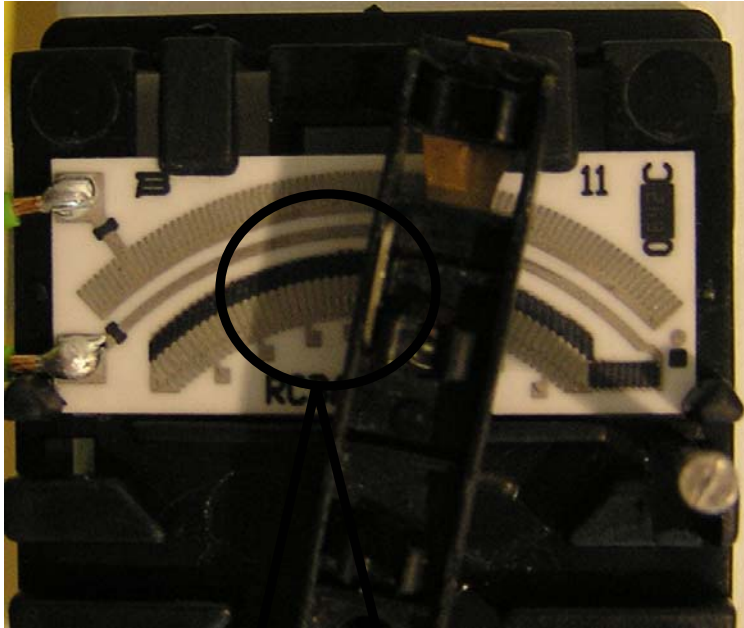
1c: contact arms that are intact.

1d: contact arms that have broken off after 600,000 wet cycles.



1d

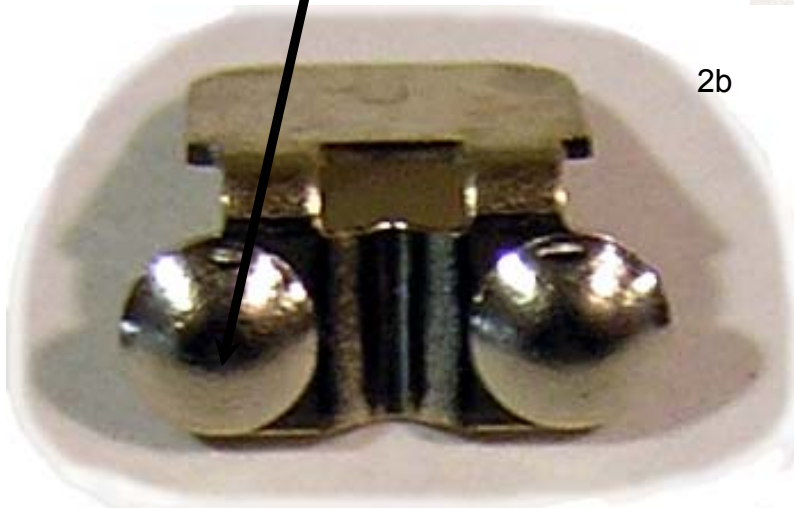
COMPARISON OF RESISTOR



FineLine's resistor design incorporates a rounded contact (2a, 2b) that cannot break and scratch the board material. Our resistor passed testing after 1 million dry swipes (without using gasoline to lubricate the sensor) which would translate into 3-4 million wet cycles.



2b



FineLine's rounded contacts (2b) are made using a noble metal called Paliney 6 which will not wear or break causing sensor failure.



2c

FineLine's sensor cover (2c) further protects the ceramic board from damage (rather than the open-face design in some other sensors).